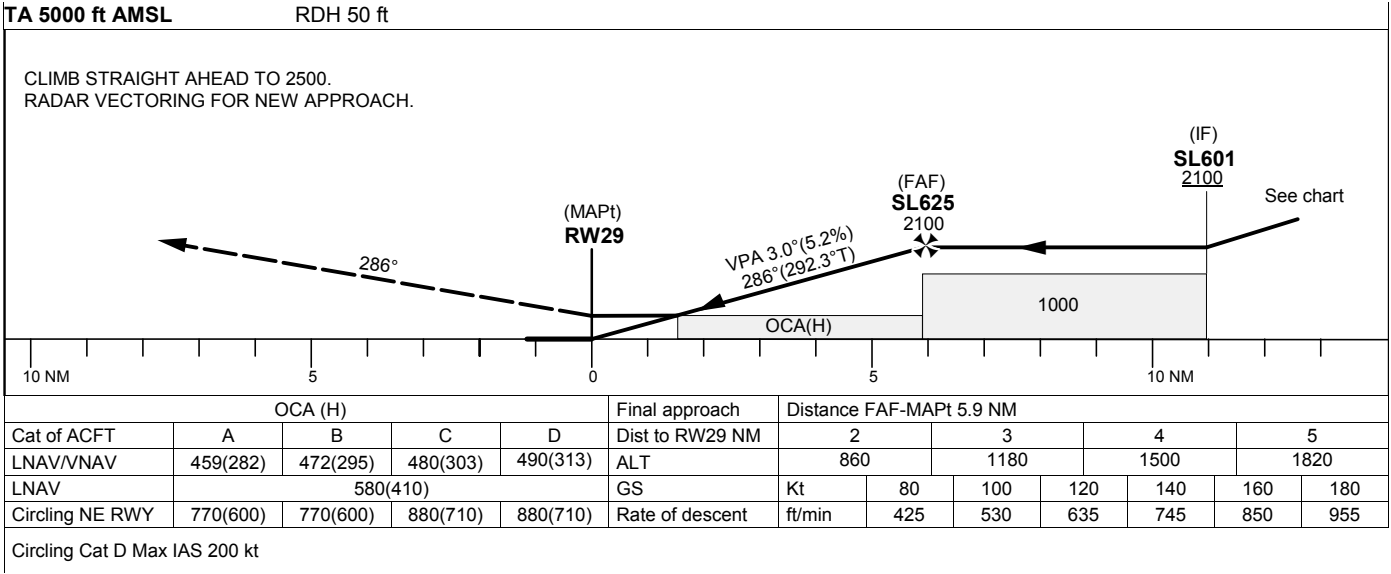
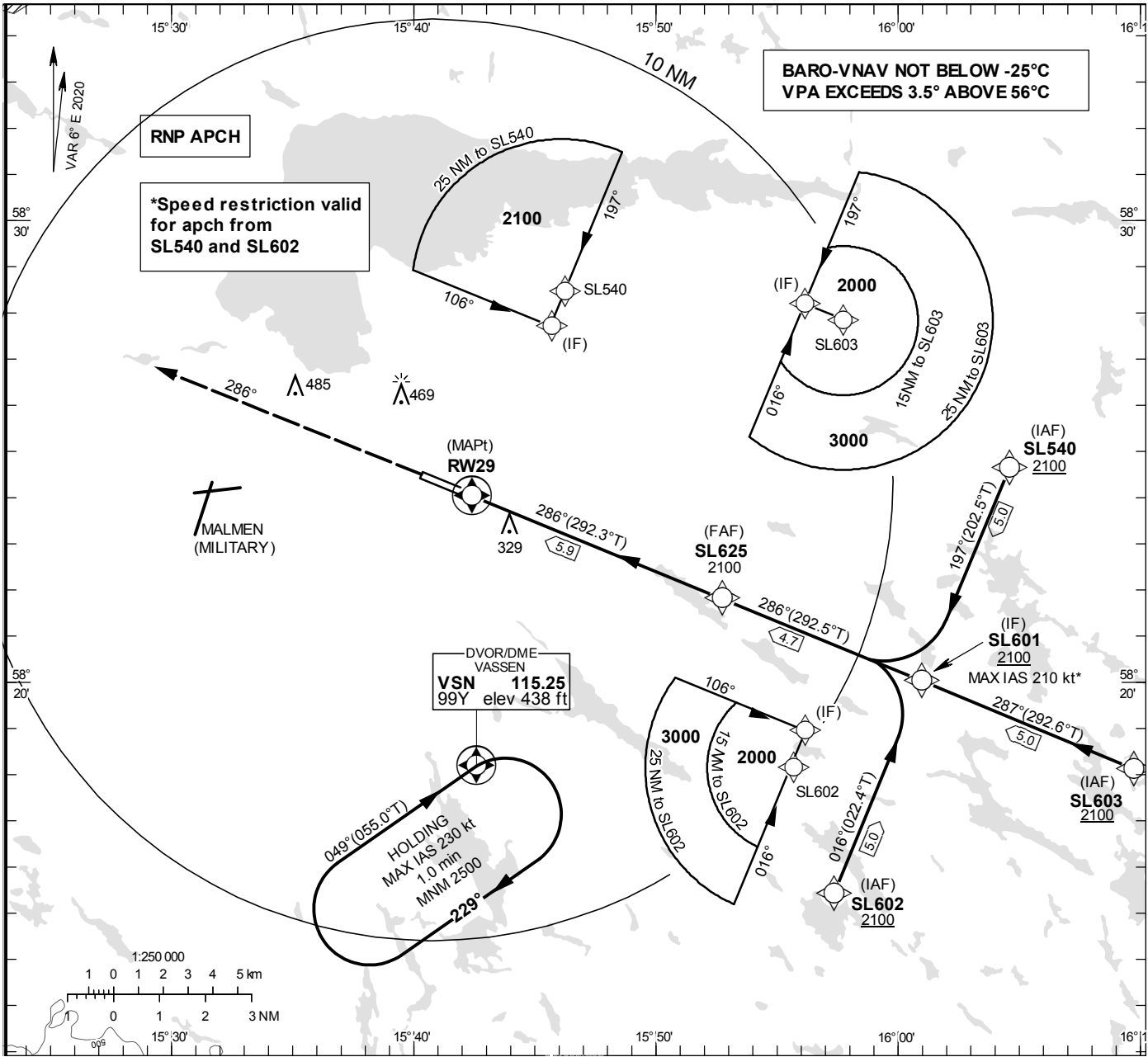


**INSTRUMENT  
APPROACH  
CHART – ICAO**

**THR ELEV 177.9 ft, AD ELEV 178 ft**  
OCH are related to THR.  
BRG are MAG (True).  
ALT, HGT and ELEV in ft.

SAAB TOWER	118.805
ÖSTGÖTA APPROACH	132.955
	135.850

**RNP RWY 29**  
(LNAV, LNAV/VNAV only)



CHANGE: Editorial

## LINKÖPING/Saab

## RNP RWY 29 via SL540

Path Desc	Waypoint Identifier	Fly-over	Course °M(°T)	Dist (NM)	Turn Dir	Altitude	Speed	VPA/ RDH	Rec Navaid	Navigation Specification
IF	SL540	-	-	-	-	+2100	-	-	-	RNP APCH
TF	SL601	-	197°(202.5°)	5.0	-	-	-210	-	-	RNP APCH

## RNP RWY 29 via SL603

Path Desc	Waypoint Identifier	Fly-over	Course °M(°T)	Dist (NM)	Turn Dir	Altitude	Speed	VPA/ RDH	Rec Navaid	Navigation Specification
IF	SL603	-	-	-	-	+2100	-	-	-	RNP APCH
TF	SL601	-	287°(292.6°)	5.0	-	-	-	-	-	RNP APCH

## RNP RWY 29 via SL602

Path Desc	Waypoint Identifier	Fly-over	Course °M(°T)	Dist (NM)	Turn Dir	Altitude	Speed	VPA/ RDH	Rec Navaid	Navigation Specification
IF	SL602	-	-	-	-	+2100	-	-	-	RNP APCH
TF	SL601	-	016°(022.4°)	5.0	-	-	-210	-	-	RNP APCH

Path Desc	Waypoint Identifier	Fly-over	Course °M(°T)	Dist (NM)	Turn Dir	Altitude	Speed	VPA/ RDH	Rec Navaid	Navigation Specification
IF	SL601	-	-	-	-	+2100	-	-	-	RNP APCH
TF	SL625	-	286°(292.5°)	4.7	-	@2100	-	-	-	RNP APCH
TF	RW29	Y	286°(292.3°)	5.9	-	@228	-	-3.0/50	-	RNP APCH
CA	-	-	286°(292.3°)	-	-	@2500	-	-	-	RNP APCH
VM	-	-	286°	-	-	-	-	-	-	RNP APCH

## ESSL Holding VSN

Path Desc	Waypoint Identifier	Fly-over	Course °M(°T)	Dist (NM)	Turn Dir	Altitude	Speed	VPA/ RDH	Rec Navaid	Navigation Specification
HM	VSN	Y	049°(055.0°)	-	R	+2500	-230	-	-	RNP 1